

# SHARP®

**XG-PH80X-N** (XGA, 6300 Lumens)  
**XG-PH80W-N** (WXGA, 5600 Lumens)  
3D Ready Systems Integration /  
Large Venue Projectors

**Ultra-Reliable, High Brightness Installation /  
Integration Projectors with DLP® Link™ Technology.  
High Quality 3D Projection from a Single Projector.**



Installation/Integration Series

# High brightness and high image quality, plus DLP® Link™ 3D compatibility provide superior performance for corporate, university, government, house of worship and rental/staging applications.

## 3D Ready

Make sure your projector is ready to use with new 3D content. Incorporating DLP Link technology, when used with compatible 3D field sequential content and PC, and optional 3D active shutter glasses (model X102, not included) that support the DLP Link system, these models captivate audiences with breathtaking imagery. Both models offer 3D support with 60 Hz and 120 Hz XGA (1024 x 768) and SVGA (800 x 600) sources with the XG-PH80W-N further offering support of WXGA sources in 1280 x 720 resolution with 60 Hz and 120 Hz (downsampled). When not being used for 3D projection, both models offer full compatibility with traditional “2D” sources.



### Requirements for Viewing 3D

1. A source PC and content that support the field sequential 3D format
  - Refer to compatibility information to confirm supported signals
  - 3D formats other than field sequential, such as formats used for Blu-ray™ 3D and DVD prepackaged media, are not compatible (as of March 2011)
2. 3D LCD Shutter Glasses (model X102, not included) that support the DLP Link system

\* An image that is simultaneously projected from more than two projectors may not appear as 3D  
 \* For additional information on DLP Link, please visit: <http://www.dlp.com/projector/dlp-innovations/3d-ready.aspx>

## High Image Quality

**6300 Lumens / XGA Native Resolution / 4:3 Aspect Ratio (XG-PH80X-N); 5600 Lumens / WXGA Native Resolution / 16:10 Aspect Ratio (XG-PH80-WN)**

The XG-PH80X-N offers optimum performance with standard 4:3 XGA and video sources; the wide-format XG-PH80W-N offers compatibility with standard XGA and 720p HDTV as well as “pixel perfect” 1280 x 800 resolution from Wide-XGA PCs.

### Intelligent Dual Lamp Design

This unique dual lamp system allows users to choose the lamp arrangement to suit their needs. Options include single or dual lamp projection, and the choice of standard brightness or “Eco+Quiet” mode projection.

The Sharp dual lamp system additionally provides “redundant” reliability. In the event one lamp should fail, projection performance can be maintained using the other lamp without interruption.

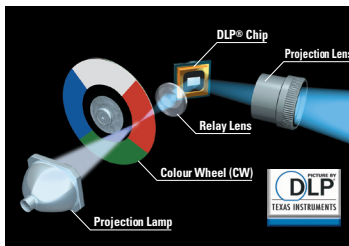


With up to 6300 lumens brightness, these projectors are ideal for use in many large venues.

## Ultra-Reliable DLP® Technology

### Long Life, High Performance DLP Chip

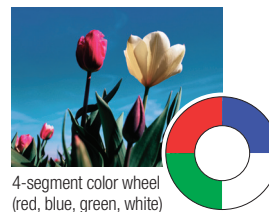
The DLP chip in the XG-PH80W-N incorporates over 1 million micromirrors, with the XG-PH80X-N's DLP chip containing close to 800,000 micromirrors. These silicon chips with their finely structured mirrors provide ultra-stable performance to deliver high quality images for longer periods. The DLP chips in these models achieve an estimated lifetime of 20,000 hours. (This measurement is at a surrounding temperature of 25°C and is a reference value, not a guarantee.)



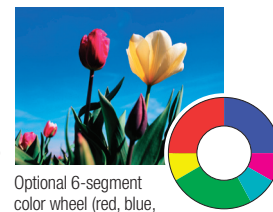
DynamicBlack technology, dramatically improves the black levels, providing incredible detail in dark scenes with virtually no noise or loss of brightness and a contrast ratio of up to 2100:1.

### Sealed DLP Chip with Interchangeable Color Wheel

The sealed DLP chip and interchangeable color wheel help provide enhanced reliability and projection flexibility. Use the included 4-segment color wheel for applications requiring highest brightness. Or, replace it with the optional BrilliantColor™ AN-PH80CW 6-segment color wheel for video applications where color accuracy is paramount.



4-segment color wheel (red, blue, green, white)



Optional 6-segment color wheel (red, blue, green, yellow, cyan and magenta)



## Presentation Convenience

### Low Fan Noise (Eco+Quiet Mode)

The intelligent multiple fan cooling system helps to ensure long term reliability, with a minimum of background fan noise.

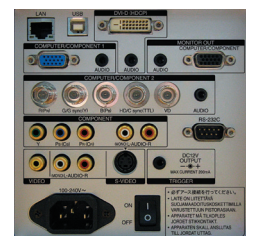
software including Microsoft® PowerPoint and Up/Down/Left/Right/Enter keys are also provided.

### Wireless Remote with PowerPoint® Presentation Control

A 25-button infrared wireless remote control is included with the projector to ensure easy remote operation. Some of the key functions include power on/standby, input select, lens zoom/focus/shift, 3D mode, image freeze, auto-sync, audio volume, AV mute and Menu. Additionally, when a standard USB cable is connected between the projector and the computer, the remote is able to duplicate many of the same functions as are found on the computer keyboard. Page Up and Page Down buttons permit wireless control of presentation

### Wide Range of Connection Terminals including DVI

These projectors are equipped with a wide range of analog and digital input terminals including 15-pin and 5-BNC RGB/component video and HDCP compliant DVI. The DVI input helps meet the growing need to display digital content. RGB/Component loop-through and stereo audio line out are also provided for easy interface with external equipment.



## Flexible Installation

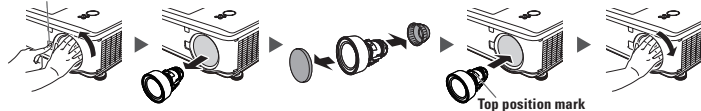
### Powered V and H Lens Shift

The power vertical and horizontal lens shift allows for exceptional flexible placement while minimizing keystone distortion. Vertical: +50%; Horizontal: +/- 10%. (Specification based on standard ANPH818EZ lens.)

### Quick Lens Exchange

The projector is designed for quick and easy lens installation and replacement\*.

LENS RELEASE button



\* Do not attempt to exchange the lens when the projector is installed and hanging from the ceiling. Injury may occur if the lens or lens cover falls.

### Anti-Theft Screw

For added security, an anti-theft screw is supplied to secure the lens more tightly.

### Five Lens Options

With these lens options, Sharp has a projection solution from 1.3 to 8.3 throw ratio. A fixed wide angle lens with 0.8 throw ratio is also available for special short-throw applications.



#### AN-PH808EX

Fixed wide lens: F2.0, f = 11.4mm, T/R 0.8±1



#### AN-PH814EZ

Wide-zoom lens: F1.8 - 2.3, f = 19.3 - 25.8mm, T/R 1:1.3 - 1.8



#### AN-PH818EZ

Standard zoom lens: F1.7 - 1.9, f = 26 - 34mm, T/R 1:1.8 - 2.4



#### AN-PH823EZ

Tele-zoom lens: F2.1 - 2.9, f = 32 - 63mm, T/R 1:2.2 - 4.4



#### AN-PH845EZ

Tele-zoom lens: F2.2 - 3.1, f = 63.5 - 117.4mm, T/R 1:4.4 - 8.3

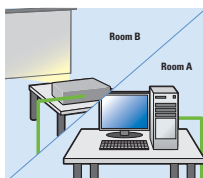
## Sharp Network Control

### Web Browser Control

Web browser control enables remote access and management of the projector by utilizing built-in firmware without the need for additional software.

### Remote Access for Control and Adjustment

Key projector control functions including power on, input select, volume, AV mute, etc. can be controlled and adjusted remotely by a computer on the network.



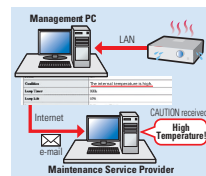
### PJLink™ Capability

The XG-PH80X-N and XG-PH80W-N projectors offer compatibility with devices that support the PJLink standard. This enables

systems to be easily built for centralized management and operation using external controllers. For information on PJLink, please visit <http://pjlink.jbmia.or.jp/english/>

### Diagnosis and E-mail Alert

E-mails can be set to automatically go out to appointed addresses when an error message is detected. This may include lamp failure, projector overheating, or cooling fan malfunction.



### Control System Compatibility

The XG-PH80X-N and XG-PH80W-N provide superior compatibility with industry standard control systems from vendors such as Crestron®, AMX® and Extron®.

## Additional Outstanding Features

### Direct Power Off and Auto Restart Function

The Direct Power Off function enables the cooling fan to keep operating even after the power supply has been turned off or unplugged from the power source. Auto Restart restores power status following a power failure or if a master power switch is being used to turn the projector(s) on and off.

### High Quality Circuitry

This includes video noise reduction, scaling, 3D Y/C separation, digital comb filter, color transient and Y delay and color temperature adjustment. High speed Auto-Response Adjust (ARA) and Pull-Down Menu Graphic User Interface (GUI) are also provided.

### Custom Startup Image Capture

These projectors are able to store a bitmap image for use as a startup and/or background watermark image.

### Audio Pass-Through (Standby Audio Out)

This permits the audio line output terminal to be live when the projector is in the standby mode.

### 12V Trigger

The 12 volt trigger enables a properly equipped motorized screen to be automatically lowered when the projector is powered on, and to be retracted when the projector is powered off.

### Enhanced Auto-Theft Design

Key security features include LAN monitor function, Kensington® lock compatibility, PIN code lock, control panel key lock, anti-theft lens housing screw and optional security cable kits (for use with ceiling mounting bracket).

### Easy Ceiling Mount Installation

Easy ceiling mount installation is ensured using Sharp's optional ceiling mounting bracket (AN-XGCM80). An optional ceiling mount extension tube (AN-EP101B) is also available along with an optional angle mount joint (AN-JT200) for use in rooms with vaulted or cathedral ceilings.

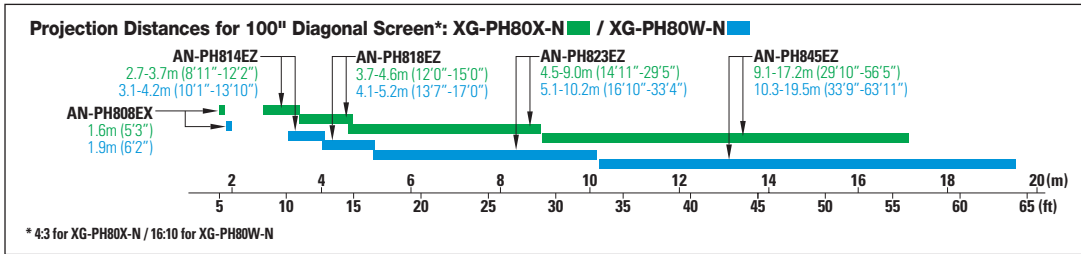
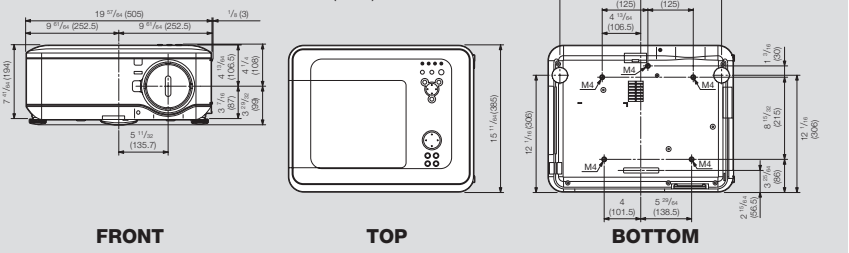
### Three Year Parts and Labor Limited Warranty with 24-hour turnaround Express Repair Support.

This helps provide peace of mind. 90 day warranty on user-replaceable projection lamp.

# XG-PH80X-N / XG-PH80W-N



## Dimensions Units: inches (mm)



### Optional Accessories

- Replacement Lamp: **AN-PH80LP** or **ANPH80LP/1**
- 6-Segment Color Wheel: **AN-PH80CW**
- 3D Active Shutter Glasses: **X102**
- Shipping Case: **AN-PH80SC**
- Component Video Cable: **AN-C3CP2**

### Ceiling Mount Options

- Ceiling Mount: **AN-XGCM80**
- Extension Tube: **AN-EP101B**
- Angle Mount Joint: **AN-JT200**
- 16" Security Cable Kit: **AN-CMCS16**
- 46" Security Cable Kit: **AN-CMCS46**

## Specifications

Model	XG-PH80X-N	XG-PH80W-N
3D Ready	Yes. Compatible with DLP® Link™ Technology	
Display Technology	0.7" DLP Chip x 1 with 4-segment Color Wheel and Sealed DLP chip. Interchangeable AN-PH80CW 6-Segment Color Wheel [adds BrilliantColor™] available as option.	0.65" DLP Chip x 1 with 4-segment Color Wheel and Sealed DLP chip. Interchangeable AN-PH80CW 6-Segment Color Wheel [adds BrilliantColor™] available as option.
Pixel Resolution / Aspect Ratio	XGA (1024 x 768) / 4:3	HD Compatible WXGA (1280 x 800) / 16:10
Brightness (Eco+Quiet Mode: Off)	6300 Lumens (Dual Lamp Operation)	5600 Lumens (Dual Lamp Operation)
Contrast Ratio	2100:1 (DynamicBlack™ on); 1000:1 (DynamicBlack™ off)	
Projection Size	50" to 200" Diagonal with AN-PH808EX lens; 40" to 500" Diagonal with all other Sharp optional lenses	
Projection Lamp (wattage) and estimated lamp life	280W x 2 / Part Number AN-PH80LP Up to 2000 hours (Eco+Quiet: Off); up to 3000 hours (Eco+Quiet: On)	
Motorized Lens Shift – Range	Vertical +50%; Horizontal +/- 10% (specification based on standard lens)	
Data and Video Compatibility	RGB input signals: UXGA (analog), SXGA+ (analog), SXGA, Mac 21" (in advanced intelligent compression), WXGA (intelligent compression with XG-PH80X-N), XGA, SVGA, VGA, VESA, Mac 19"/16"/13". 15, 31-90 kHz (H), 50-85 Hz (V), 12-165 MHz (pixel clock) (plug & play VESA; DDC 1/2B). NTSC/NTSC 4.43 / PAL / PAL(60Hz)/PAL-M/PAL-N/SECAM DTV/HDTV (480i/P, 576i/P, 720P, 1080i, 1080P)	
Input Terminals	Analog RGB/Component x 2 (15-pin mini D-sub x1, 5-BNC x1), digital RGB/component (24-pin DVI-D/HDCP) x1, audio L/R x 3 (3.5mm stereo mini jack), video x1 (RCA), S-Video x1, audio L/R stereo x2 (RCA), LAN x1 (RJ-45, 10BASE-T/100BASE-TX), RS-232C serial port x1 (9-pin D-sub), USBx1 (Type B)	
Output Terminals	Analog RGB/component loop-through x1 (15-pin mini D-sub), audio L/R x1 (3.5mm stereo mini jack). Audio line-out is variable. [There is no "loop-out" of DVI input signals.] 12V DC trigger output (max 200mA current).	
Control System Compatibility	Crestron®, AMX®, Extron®, Bitlogix®. Compatible with PJLink® Class 1 projector control protocol.	
Built-in Audio	3 Watts x 2 (Stereo); 51mm x 41mm Speakers x 2	
IR Wireless Remote Control	Wide-function dual sensor remote includes keys for power on/standby, input, 3D mode, page up/down, volume up/down, zoom, focus, lens shift, up/down/left/right arrow, up/down/left/right cursor, menu, enter, return, auto-sync, AV-mute, image freeze,	
Fan Noise	39 dB (Eco+Quiet: Off); 34 dB (Eco+Quiet: On)	
Power Source	100-240V AC, 50/60Hz (multi-voltage)	
Power Consumption (standby)	715W (0.28W) with AC 100V, 675W (0.41W) with 240V	
Heat Dissipation	2,682 BTU/hour (Eco mode off) with AC100V / 2,532 BTU/hour (Eco mode off) with AC240V	
Safety Approval	UL, FCC Class A	
Weight	36.4 lb (16.5kg)	
Dimensions (W x H x D)	Main body only (without protruding parts): 19-7/8" x 7-41/64" x 15-5/32" (505x194x385 mm) Main body including protruding parts: 20" x 8-7/64" x 15-5/32" (508 x 206 x 385 mm)	
Included Accessories	Wireless Remote with keyboard cursor control; Two AAA batteries; 6' Power Cord; 6' RGB Cable; Dust Proof Cap; Projector Manual & Tech Reference CD-ROM, Operation Manual.	
Limited Warranty	3 Years Parts and Labor including 3 Years "ER" 24-Hour Turnaround Express Repair support. (90 day warranty on user-replaceable projection lamp.)	
UPC	074000374072	074000374058

Design and specifications are subject to change without notice. Brightness values indicate overall average values of the product at the time of shipment and are stated based on ISO 21118-2005. Sharp and related trademarks are trademarks or registered trademarks of Sharp Corporation and/or its affiliated entities. DLP, DLP Link, BrilliantColor and DynamicBlack are trademarks or registered trademarks of Texas Instruments. Crestron is a registered trademark of Crestron Electronics, Inc. AMX is a registered trademark of AMX Corporation. Extron is a registered trademark of RGB Systems, Inc. Bitlogix is a registered trademark of Bitlogix Software LLC. Kensington is a registered trademark of ACCO Brand Corporation. PJLink is a registered trademark of Japan Business Machine and Information System Industries Association. Blu-ray is a trademark of the Blu-ray Disc Association. All other trademarks are the property of their respective owners.



SHARP ELECTRONICS CORPORATION  
Professional Display Division  
Sharp Plaza, Mahwah, NJ 07495-1163

For more information: call 1-866-4-VISUAL (1-866-484-7825) or email [www.sharpusa.com/projectors](http://www.sharpusa.com/projectors)